

User's Manual Thermal Receipt Printer **PP9000E**

◆**Safety Precautions**

DO NOT touch auto-cutter.
DO NOT contact the print head and its related parts during the process or the printer may be SHUT DOWN your equipment immediately if odor or unusual noise. Continued usage will unplug the equipment and contact your dealer. NEVER ATTEMPT to repair this product yourself, improper repair work can be dangerous, thus invalidates your guarantee of this equipment in the same time.
BE SURE to use the specified power source, connection to an improper power source may destroy your equipment and lead to fire.
DO NOT allow foreign matter to fall into the equipment.
Penetration by foreign objects may lead to fire. If water or other liquid spills into this equipment, unplug the power cord immediately and then contact your dealer. Continued usage may lead to fire.

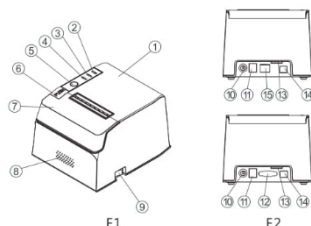


◆**Matters need attention**

DO NOT connect cables in ways other than those mentioned in this manual. Different connections may cause equipment damage.
BE SURE to set this equipment on a firm, stable, horizontal surface. The product may break or cause injury if it falls.
DO NOT use in locations subject to high humidity or dust levels. Excessive humidity and dust may cause equipment damage or fire.
DO NOT expose this equipment directly in the sun, or to the blaze or other heat source, which may reduce the effect of printing.

TO ENSURE safety, unplug this product before leaving it unused for an extended period.

1	Printer Cover
2	Power Led
3	Error Led
4	Paper out LED
5	Feed Button
6	Open Cover Button
7	Cutter Cover
8	Speaker
9	Power Switch
10	Power Outlet
11	Cash Drawer Interface
12	Serial Interface
13	SIM Slot
14	USB interface
15	Ethernet Interface



◆**Common Operations:**

FEED PAPER: Press the feed button, printer will feed paper. Release the feed button, stop feeding paper.

SELF-TEST: Press the feed button, turn on the power. After the power LED and Error LED flash together, release the feed button. Self-test will be printed.

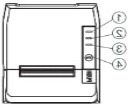
DRIVER-INSTALLATION:

- Access the driver from CD or download it from official website click download from supplier website.
- Choose correct printer model PP9000EU and port, click "install"

- After finishing installing, it shows "Congratulations, driver installation successful", click "confirm" to finish the installation.

SETTINGS:

- Download setting tool from CD or from supplier website
- Choose the latest version setting tool, double click "Setting ToolVx.xx.exe" to open
- Choose PP9000EU, choose correct port and choose related parameter, click "set" then the printer will print out related parameter.
- Click "Help" to check detailed explanation

	1	Power LED	Power light is on when the printer is on
	2	Error LED	It indicates errors. See table for detail T1
	3	Paper out LED	It is on when paper is out
	4	Feed button	This button feeds paper or used for self-checking

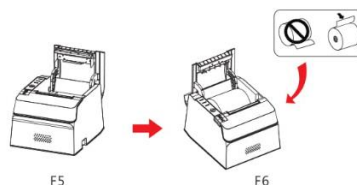
◆ **Switch on/off:**

Press "o" to switch on power and press "o" to switch off power, like picture F4



◆**Connection:**

UNPLUG all cables from the outlets before connection! pull out; insert with electrification may damage the printer.



◆ **Paper steps:**

- Press the button to open the cover. See F5.
- Remove the paper spool, then remove any used paper roll core and insert a new roll paper, be aware of the right direction (shown in the F7)
- Pull out some paper, as shown in the F8, put the spool with roll paper altogether into the paper case, then close the cover.
- Tear off the paper, as shown in the F9.

◆ **T1 Table T1:**

Indicator lights status	Meaning	Description
Continuous flash	Paper near out	Reminds you of preparing to install a new roll paper
Buzzer rings	Print head uplift	Put down print head
Buzzer rings and indicator	Print head overheat	Recovers automatically when the print head cools.
Buzzer rings and indicator blinks	Auto cutter Position Error	Impossible to recover, check if there is paper jam.

◆**Packing List:**

NO	Names and Specifications of Goods	Quantity	Description
1	POS Printer	1	
2	Interface Cable	1	
3	Power Supply	1	
4	QC Certificate	1	
5	Test Paper	1	Optional Accessories

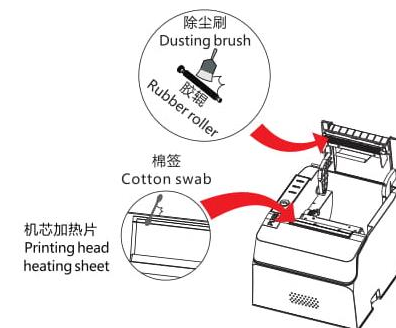
Note: It may be different with this chart when there is special request for the order.

◆ **Product Specification:**

Printing method	Direct Thermal Printer
Dot density	8 (dots) /mm. 576 (dots)/ (line)
Printing width	79.5±0.5mm
Print speed	250mm about 250mm/s
Character size	ANK:12x24,1.5x3, GB2312 Characters:24x24,3(W)x3(H)MM
Paper roll	φ80mm φ13mm φ80mm(Max outside diameter) φ13mm(Min inside diameter) 0.06~0.08mm 0.5±0.5mm Thickness:0.06~0.08mm Width:79.5±0.5mm
Money drawer function	DC24V,1A, RJ-11 DC24V,1A,Connector:RJ-11,6lines
Power supply	DC24V±10%, 1.5A, Connector: A-1009-3P
Life	Thermal head:100km Autocutter: 500,000 cuts (less than 30 cuts/m)
Environment	Operating Temperature:5~50°C , Operating Humidity:10~80% Storage Temperature: -20~60°C , Storage Humidity:10~90%

◆ **Cleaning and Maintenance:**

Thermal printer needs to be maintained regularly. Methods are as below:
As shown in Figure 10, use the cotton swab dipped by right amount of alcohol to wipe the printing head, in order to remove the accumulated carbon, dust etc; use dusting brush to clean the paper scraps and dust on the rubber roller of printing head. Above operations need to be performed in the printer power off status.



F7